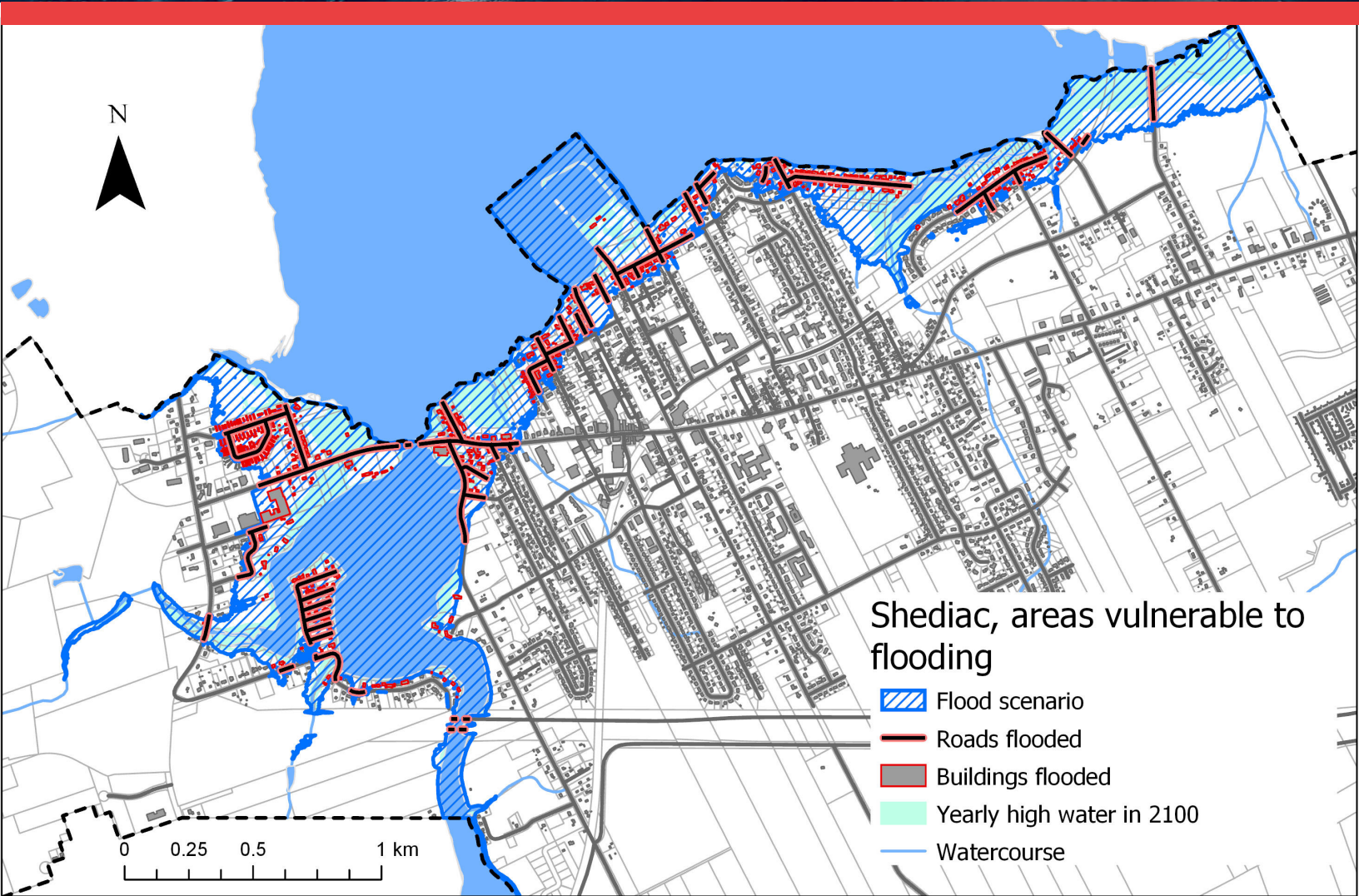


Do you live in a flood zone?



Map developed by the South-East Regional Service Commission showing the zones in Shediac that could potentially flood during a major storm event by the year 2100.

The Town of Shediac invites its residents to learn more about climate change issues and their impact on municipal infrastructures.

Public consultation session

Where: Shediac Multipurpose Centre (58 Festival Street)
When: Tuesday, January 29 – 7 p.m. (No registration required)

* In case of storm, the session will be postponed on Tuesday February 5th at 7p.m.

Presentations • Consultations • Discussions

